



Introduction

Today's Landscape

Security Teams

Facilities

Medical Emergencies

Emergency Planning

Volunteer Policies

Predator Profiles

The Key to Security

www.kidcheck.com/about-us/child-safety

Securing Your Children's Ministry

Practical Steps To Creating a Secure
Children's Ministry Environment

My people perish for lack of knowledge – Hosea 4:6



Introduction

Today's Landscape

Security Teams

Facilities

Medical Emergencies

Emergency Planning

Volunteer Policies

Predator Profiles

The Key to Security

Being Safety Minded





Introduction

Today's Landscape

Security Teams

Facilities

Medical Emergencies

Emergency Planning

Volunteer Policies

Predator Profiles

The Key to Security

www.kidcheck.com/about-us/child-safety

Why Child Safety Matters

A Quick Glance at the Numbers...

- Over **747,000** registered sex offenders in the US alone.
- More than **100,000** sexual offenders who fail to report yearly.
- **1 in 3** girls and **1 in 4** boys will be sexually assaulted before 18.
- **40%** of offenders who target young children are juveniles themselves.
- Only **3%** of sexual offenders have a chance of getting caught.
- Over **80%** of child victims know their abusers.



Introduction

Today's Landscape

Security Teams

Facilities

Medical Emergencies

Emergency Planning

Volunteer Policies

Predator Profiles

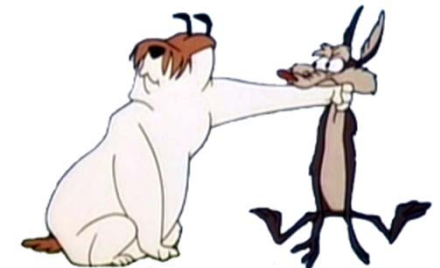
The Key to Security

www.kidcheck.com/about-us/child-safety

Building a Successful Security Team

How to Build a Successful Security Team...

- Find a trusted law enforcement member to head the team.
- Don't advertise for your security ministry.
- Get to know who's on the team personally
 - They are your #1 resource in any incident
- Equip your team with GOOD radios and keep one yourself
- Get Help – www.cppssite.com





Introduction

Today's Landscape

Security Teams

Facilities

Medical Emergencies

Emergency Planning

Volunteer Policies

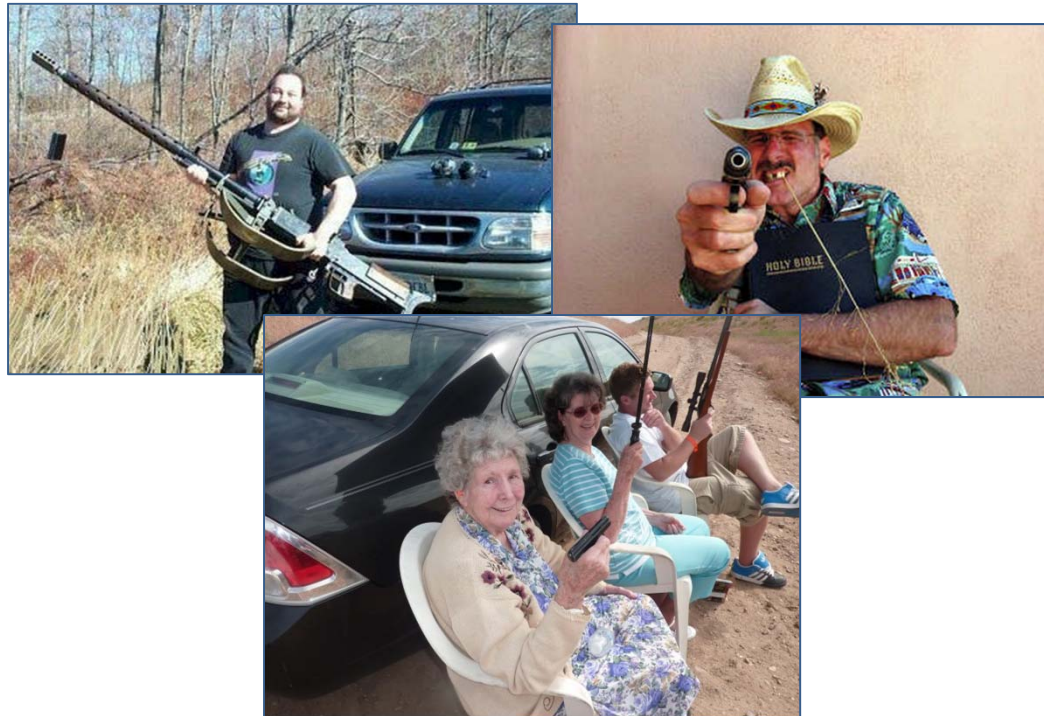
Predator Profiles

The Key to Security

www.kidcheck.com/about-us/child-safety

Building a Successful Security Team

How to Build a Successful Security Team...





Introduction

Today's Landscape

Security Teams

Facilities

Medical Emergencies

Emergency Planning

Volunteer Policies

Predator Profiles

The Key to Security

www.kidcheck.com/about-us/child-safety

Building a Successful Security Team

How to Build a Successful Security Team...





Introduction

Today's Landscape

Security Teams

Facilities

Medical Emergencies

Emergency Planning

Volunteer Policies

Predator Profiles

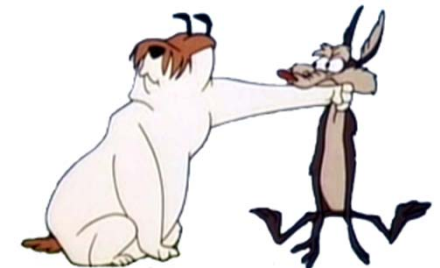
The Key to Security

www.kidcheck.com/about-us/child-safety

Building a Successful Security Team

How to Build a Successful Security Team...

- Find a trusted law enforcement member to head the team.
- Don't advertise for your security ministry.
- Get to know who's on the team personally
 - They are your #1 resource in any incident
- Equip your team with GOOD radios and keep one yourself
- Get Help – www.cppssite.com





Introduction

Today's Landscape

Security Teams

Facilities

Medical Emergencies

Emergency Planning

Volunteer Policies

Predator Profiles

The Key to Security

www.kidcheck.com/about-us/child-safety

Facilities Security

Simple Changes that Make a Huge Difference

- Use classrooms in a highly visible area
- If classrooms don't have windows, keep doors open
 - Use child gates
 - Maintain right volunteer ratio
- Control access to individual classrooms
- Limit the number of entry points to your children's area.
- Always assume the worst and apply common sense



Introduction

Today's Landscape

Security Teams

Facilities

Medical Emergencies

Emergency Planning

Volunteer Policies

Predator Profiles

The Key to Security

www.kidcheck.com/about-us/child-safety

Facilities Security

Simple Changes that Make a Huge Difference





Introduction

Today's Landscape

Security Teams

Facilities

Medical Emergencies

Emergency Planning

Volunteer Policies

Predator Profiles

The Key to Security

www.kidcheck.com/about-us/child-safety

Medical Emergencies

During an incident is the worst time to prepare

- Have a first aid kit
 - Make sure volunteers know where it is
 - CLEARLY mark it
- Have a system for identifying allergies per child
- Document an incident and make sure you can find it
- Take photos of any incident to protect all involved
- Get medical releases from parents
 - Make sure you can access them remotely
- Train your volunteers and security team in CPR



Introduction

Today's Landscape

Security Teams

Facilities

Medical Emergencies

Emergency Planning

Volunteer Policies

Predator Profiles

The Key to Security

www.kidcheck.com/about-us/child-safety

Medical Emergencies

During an incident is the worst time to prepare





Introduction

Today's Landscape

Security Teams

Facilities

Medical Emergencies

Emergency Planning

Volunteer Policies

Predator Profiles

The Key to Security

www.kidcheck.com/about-us/child-safety

Medical Emergencies

During an incident is the worst time to prepare

**Heartsaver®
Child CPR AED**



Tap and shout
Yell for help. Send someone to phone 911 and get an AED



Look for no breathing or only gasping
Push hard and fast. Give 30 compressions



Open the airway and give 2 breaths
Repeat sets of 30 compressions and 2 breaths



If you are alone after 5 sets of 30 compressions and 2 breaths, phone 911, and then resume sets of 30:2
When the AED arrives, turn it ON and follow the prompts





Introduction

Today's Landscape

Security Teams

Facilities

Medical Emergencies

Emergency Planning

Volunteer Policies

Predator Profiles

The Key to Security

www.kidcheck.com/about-us/child-safety

Emergency Planning

Don't make it worse by not knowing what to do

- Develop a plan with your security team
- Think natural disaster (fire/flood/etc)
- Think medical emergency (where/when to move a victim)
- Think security emergency (angry parent/custody issues)
- Know what to do before it happens
- Publish the plan and make sure you volunteers know what to do
 - Good emergency planning could save your organization!



Introduction

Today's Landscape

Security Teams

Facilities

Medical Emergencies

Emergency Planning

Volunteer Policies

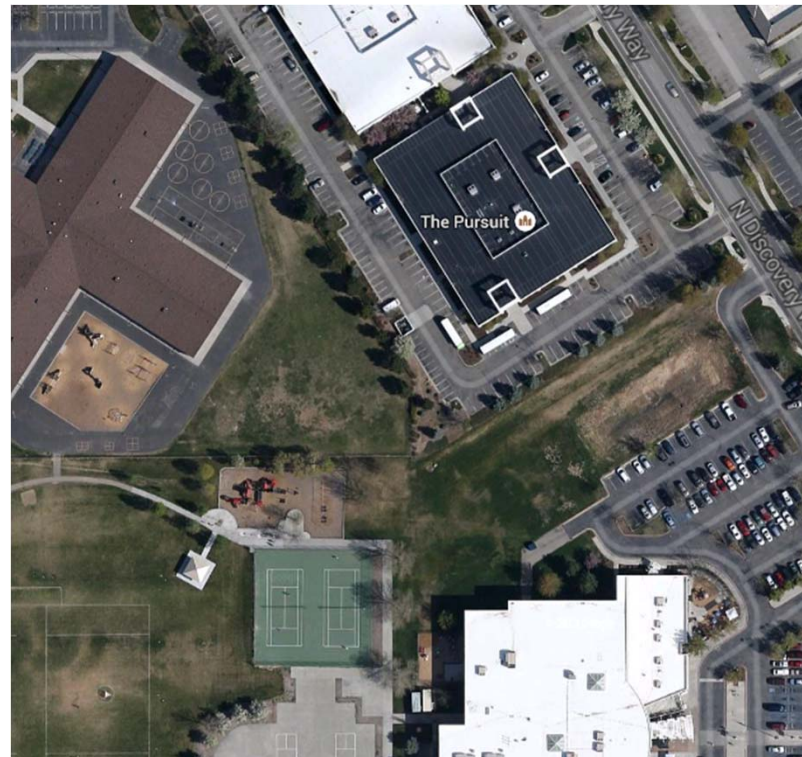
Predator Profiles

The Key to Security

www.kidcheck.com/about-us/child-safety

Emergency Planning

Don't make it worse by not knowing what to do





Introduction

Today's Landscape

Security Teams

Facilities

Medical Emergencies

Emergency Planning

Volunteer Policies

Predator Profiles

The Key to Security

www.kidcheck.com/about-us/child-safety

Volunteer Policies

They only work if you use them every time

- ALWAYS background check a volunteer
- Repeat background checks every 12-24 months
- Institute a mandatory waiting period
- ALWAYS use the rule of 2's
- Prevent opportunities for abuse by developing written policies
- Get Help!
 - www.stopitnow.com
 - www.kidcheck.com/blog
 - KidCheck Child Protection Policy Webinar





Introduction

Today's Landscape

Security Teams

Facilities

Medical Emergencies

Emergency Planning

Volunteer Policies

Predator Profiles

The Key to Security

www.kidcheck.com/about-us/child-safety

False Assumptions

Ones we hear most often

1. Abuse will never happen in our church – it only happens in places like (you add the descriptor).
1. I know the people in our church...their friends, family, people I grew up with my whole life.
2. Our church and facility are safe for safe for kids...why would someone target us?
3. Predators are monsters! I'll know one when I see one.



Introduction

Today's Landscape

Security Teams

Facilities

Medical Emergencies

Emergency Planning

Volunteer Policies

Predator Profiles

The Key to Security

www.kidcheck.com/about-us/child-safety

Predator Profiles

Who are they?

Power Predator

- Takes victim by force
- Strikes only when they feel they can prevail
- Cannot easily retreat & claim a misunderstanding
- Less of a focus for churches and established organizations

Example: A child grabbed in a park or school yard & forced into a car.

Persuasive Predator

- Uses personality & charm to influence others
- Works tirelessly to gain trust & access to victims
- Waits for just the right time to strike
 - Example: A wolf in sheep's clothing.



Introduction

Today's Landscape

Security Teams

Facilities

Medical Emergencies

Emergency Planning

Volunteer Policies

Predator Profiles

The Key to Security

www.kidcheck.com/about-us/child-safety

Persuasive Predator Characteristics

What do they look like?

Single/Married

Rich/Poor

Educated/Uneducated

Any Profession

All Ethnicities & Race

Responsible

Deliberate

Careful in Planning

Opportunistic

Charismatic

Helpful

Attentive

Kind

Intelligent

Resourceful

Risk takers

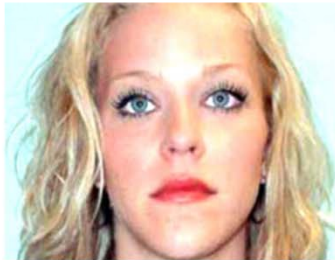
Arrogant

Prideful

Intuitive

Revered

Identify The Predator



Identify The Predator



ALL CONVICTED



Introduction

Today's Landscape

Security Teams

Facilities

Medical Emergencies

Emergency Planning

Volunteer Policies

Predator Profiles

The Key to Security

www.kidcheck.com/about-us/child-safety

Predator Profiles

How do they work?

1. Infiltrate a group or community
2. Work tirelessly to earn trust & remove barriers
3. Community or organization drops guard
4. Gain access to victims (Children)
5. Begin process of grooming
6. Start with innocent behaviors
7. Child becomes comfortable
8. Transition to more risky behaviors
9. Increasing level of sexuality is introduced
10. Abuse occurs



Introduction

Today's Landscape

Security Teams

Facilities

Medical Emergencies

Emergency Planning

Volunteer Policies

Predator Profiles

The Key to Security

www.kidcheck.com/about-us/child-safety

Predator Profile

Protecting Against Them...

- Establish and communicate a Child Protection Policy
- Educate & train staff and volunteers
- Provide a secure check-in & check-out process
- Be aware!
- Watch over children that are more vulnerable
- Take children's comments, feedback, observations seriously
- Predators count on privacy! Remove points of isolation
- Create highly visible classrooms
- Utilize resources in your community



Introduction

Today's Landscape

Security Teams

Facilities

Medical Emergencies

Emergency Planning

Volunteer Policies

Predator Profiles

The Key to Security

www.kidcheck.com/about-us/child-safety

The Key to CM Security

Follow Your Own Rules

- Don't make exceptions no matter how well you know the parent
- Never leave a child alone with an adult
- Decrease Isolation & Increase Accountability
- Don't be afraid to say NO!
- **You** are responsible for the child's safety, not "That One Parent"
- Keep good records of attendance
- Don't allow children to be unattended before or after a program
- Use common sense & be safe!



Introduction

Today's Landscape

Security Teams

Facilities

Medical Emergencies

Emergency Planning

Volunteer Policies

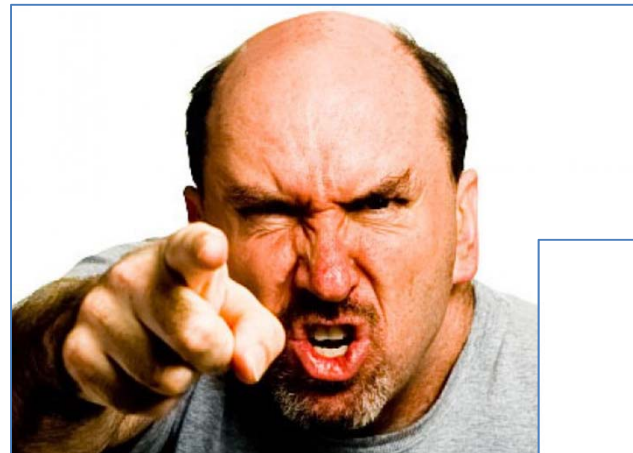
Predator Profiles

The Key to Security

www.kidcheck.com/about-us/child-safety

The Key to CM Security

Follow Your Own Rules





Introduction

Today's Landscape

Security Teams

Facilities

Medical Emergencies

Emergency Planning

Volunteer Policies

Predator Profiles

The Key to Security

www.kidcheck.com/about-us/child-safety

Security Questions?

Alex Smith

www.kidcheck.com

E-mail - awsmith@kidcheck.com

855-543-2432 (toll free)
(02) 8015 5915 (Sydney)





Introduction

Today's Landscape

Security Teams

Facilities

Medical Emergencies

Emergency Planning

Volunteer Policies

Predator Profiles

The Key to Security

www.kidcheck.com/about-us/child-safety

Code Adam

Use existing plans to simplify



- 1) All exterior access to the building is locked and monitored; anyone approaching a door is turned away.
- 2) Begin looking for the child. If the child is not found within 10 minutes, law enforcement is called.
- 3) If the child is found and appears to have been lost and unharmed, the child is reunited with the searching family member.
- 4) The Code Adam page will be canceled after the child is found or law enforcement arrives.

http://en.wikipedia.org/wiki/Code_Adam



Introduction

Today's Landscape

Security Teams

Facilities

Medical Emergencies

Emergency Planning

Volunteer Policies

Predator Profiles

The Key to Security

www.kidcheck.com/about-us/child-safety

Code Adam

Use existing plans to simplify



http://en.wikipedia.org/wiki/Code_Adam



Introduction

Today's Landscape

Security Teams

Facilities

Medical Emergencies

Emergency Planning

Volunteer Policies

Predator Profiles

The Key to Security

www.kidcheck.com/about-us/child-safety

Volunteer Policies

They only work if you use them every time



K. Ode, a minor child, by and
through her natural guardians
John Ode and Linda Ode

v.

Friendship Celebration Lutheran
Church of Ada County, Idaho Inc.

1/17/2013 CV-PI-2013-00954 (Boise)

Negligence complaint. A man working at a church forced a child into a room where he sexually assaulted and battered her.